



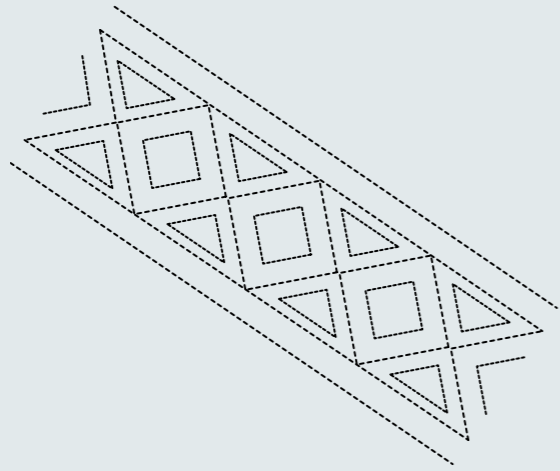
AMTSU

**OU D**

An Industry Project  
*CAPSULE COLLECTION*

***CONTENT***

F : RESEARCH  
E : DEVELOPMENT  
M : MOOD & COLOURS  
M : TEXTILE AND PRINT  
E : COLLECTION



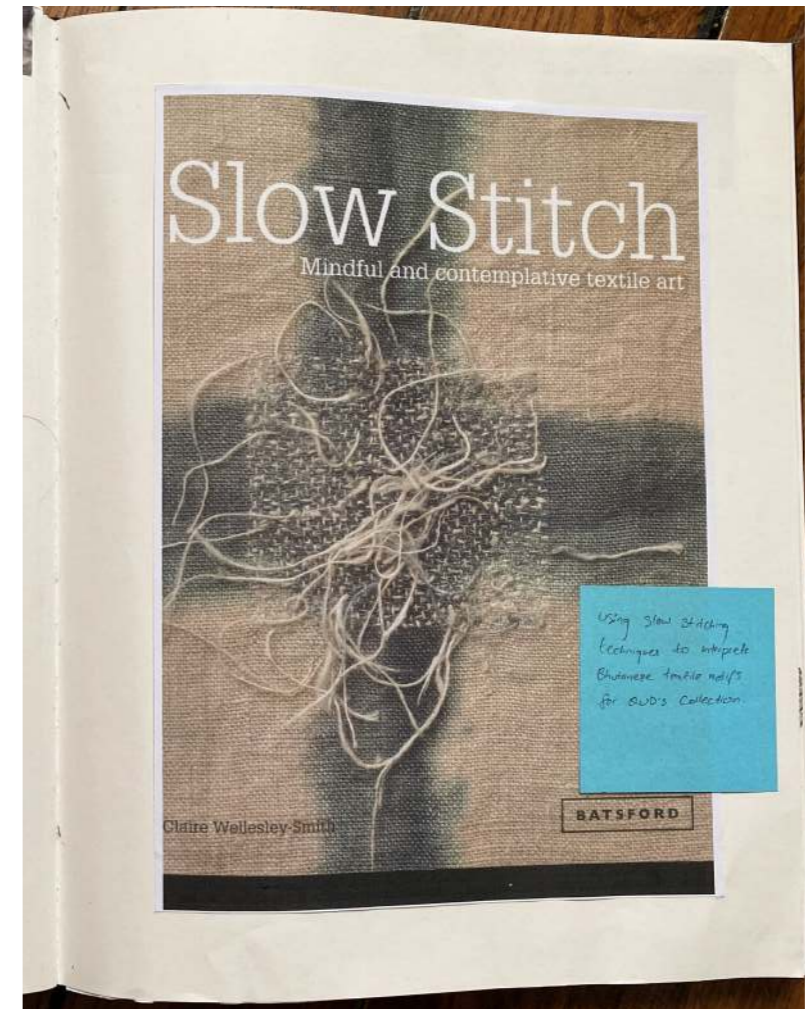
*FEMMININ*

*BOLDNESS*

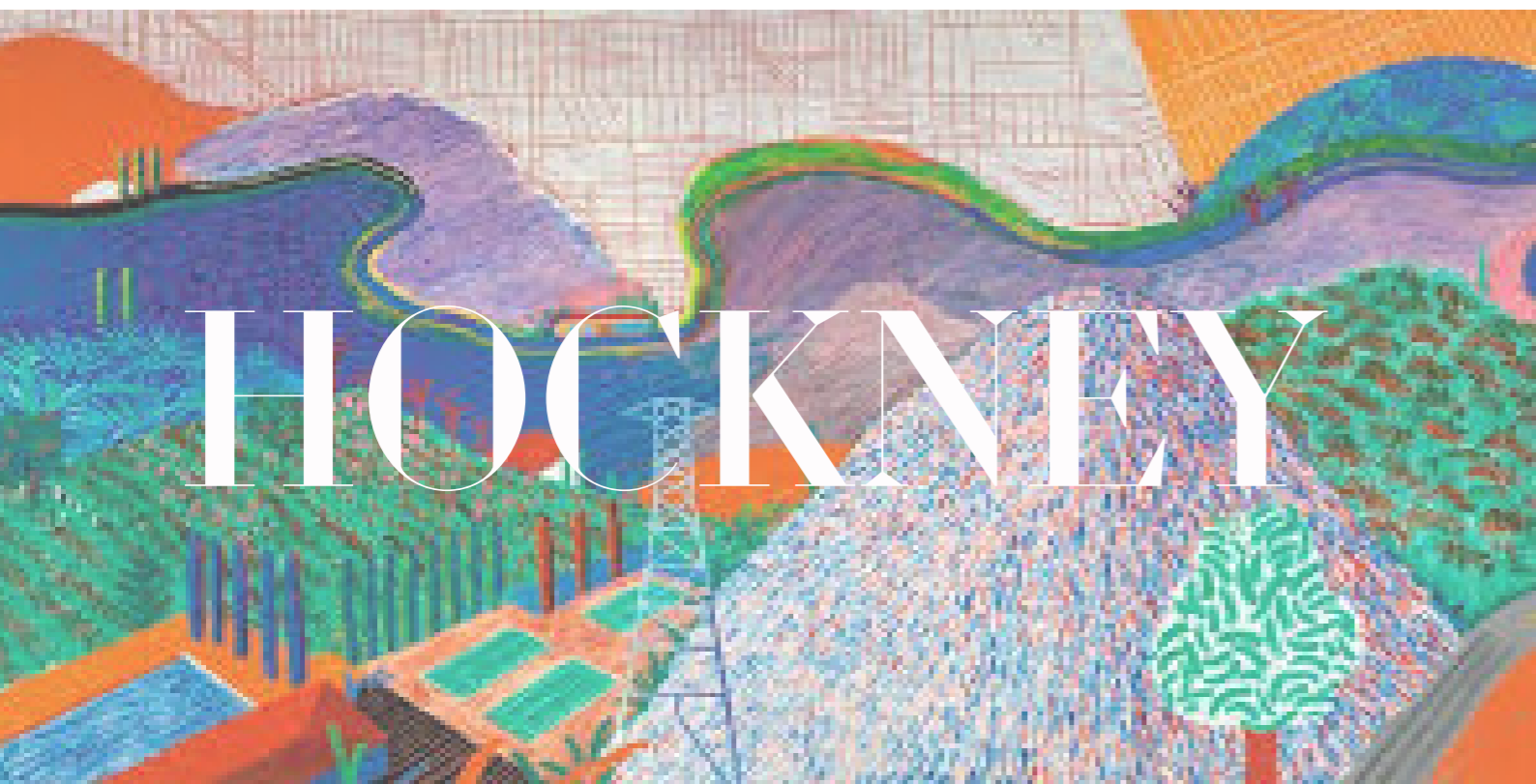
*RESEARCH*



KIRA

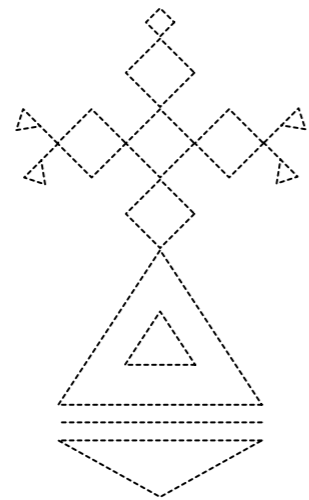


Inspired from the textile craft of Bhutan and extracting the motifs of this textile in the form of stitches to create contemporary fashion looks



*A culture & an Artist*

*EMPATHETIC*



*4 / F*

*E*

*DEVELOPMENT*



Recreating

# Blending



# & Inspired

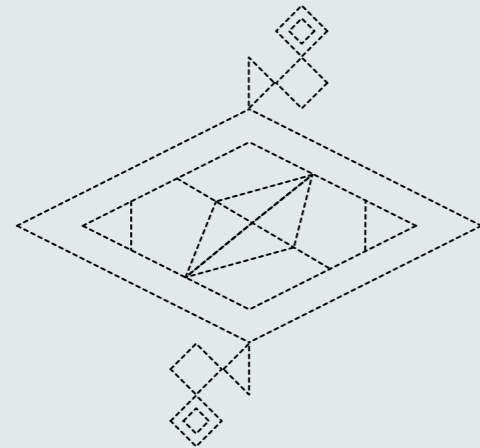


*4 / F*

*E*



*MINDFUL*



*3 / F*

*E*

*M*

*MOOD & COLOURS*



*Mood*



*Milky amythest*  
Pantone 17-3725 TCX



*Rose Dreams*  
Pantone 15-3412 TCX



*Moon on earth*  
Pantone 11-0606 TCX



*Mint journey*  
Pantone 14-6330 TCX

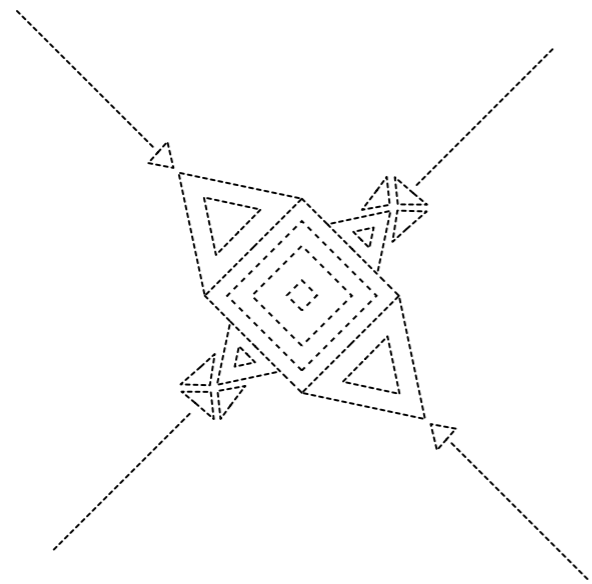


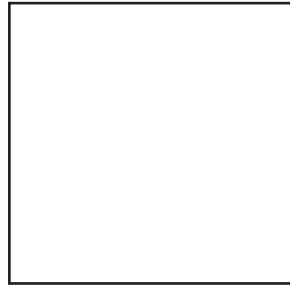
*Winter sky*  
Pantone 16-4032 TCX



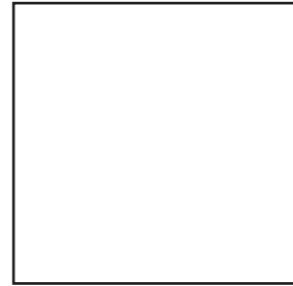
*E*

*M*

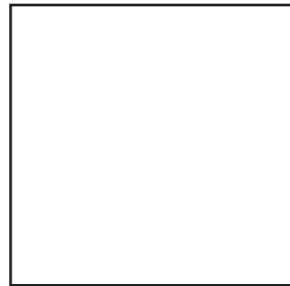




Hand woven raw silk  
100% silk  
Peace silk, organic



Chiffon  
100% silk  
Light weight, translucent



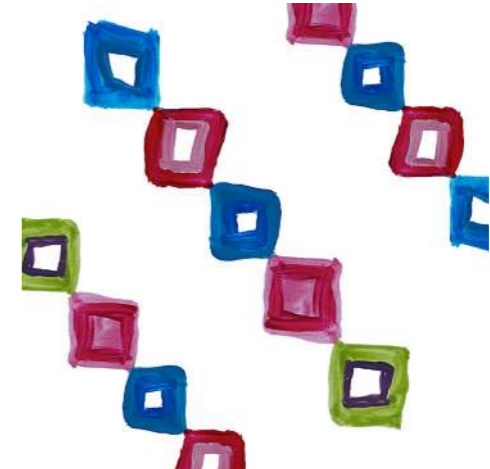
Twill silk  
100% silk  
Light weight, smooth



Textured textile  
Cotton and viscose  
light, breathable



Organza  
100% silk  
sheer, crisp & light weight



*E*

*M*



*M*



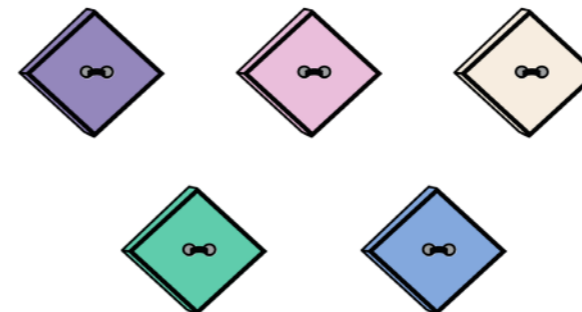
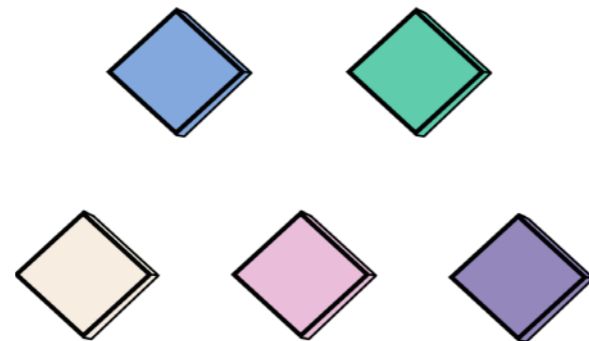
*2 / F*

*E*

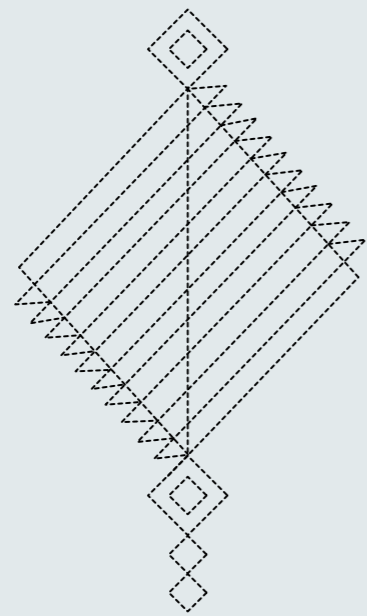


*M*

*M*



*EFFERVESCENT*



*I / F*

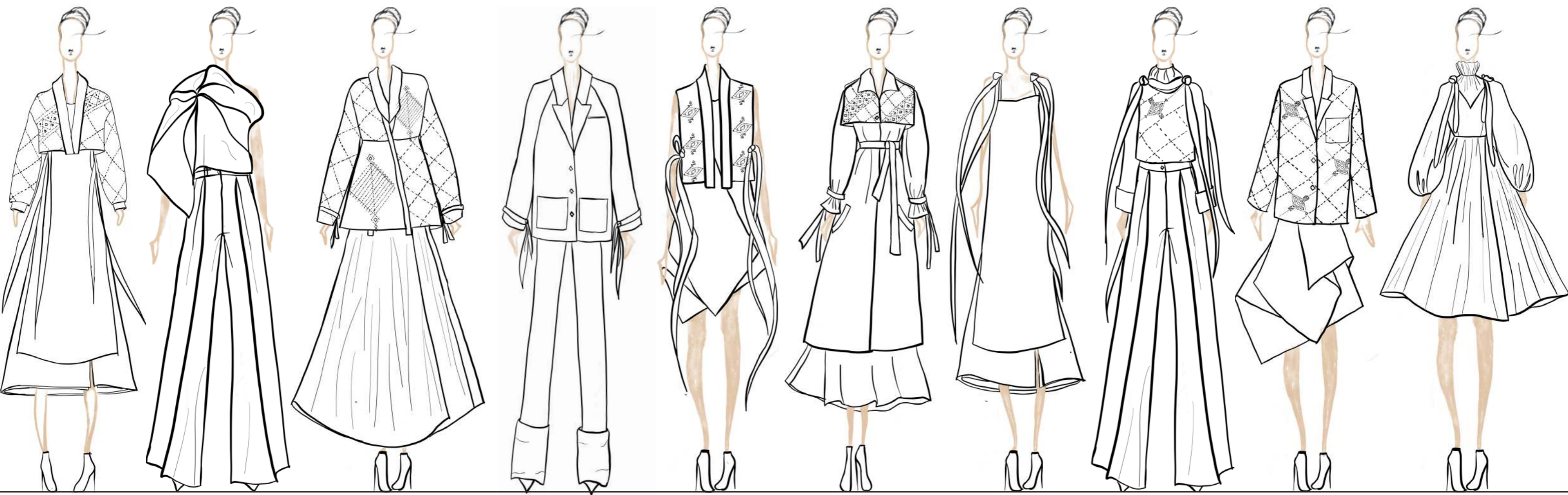
*E*

*M*

*M*

*E*

*COLLECTION*



*I /  
F*

*E*

*M*

*M*

*E*



*I /  
F*

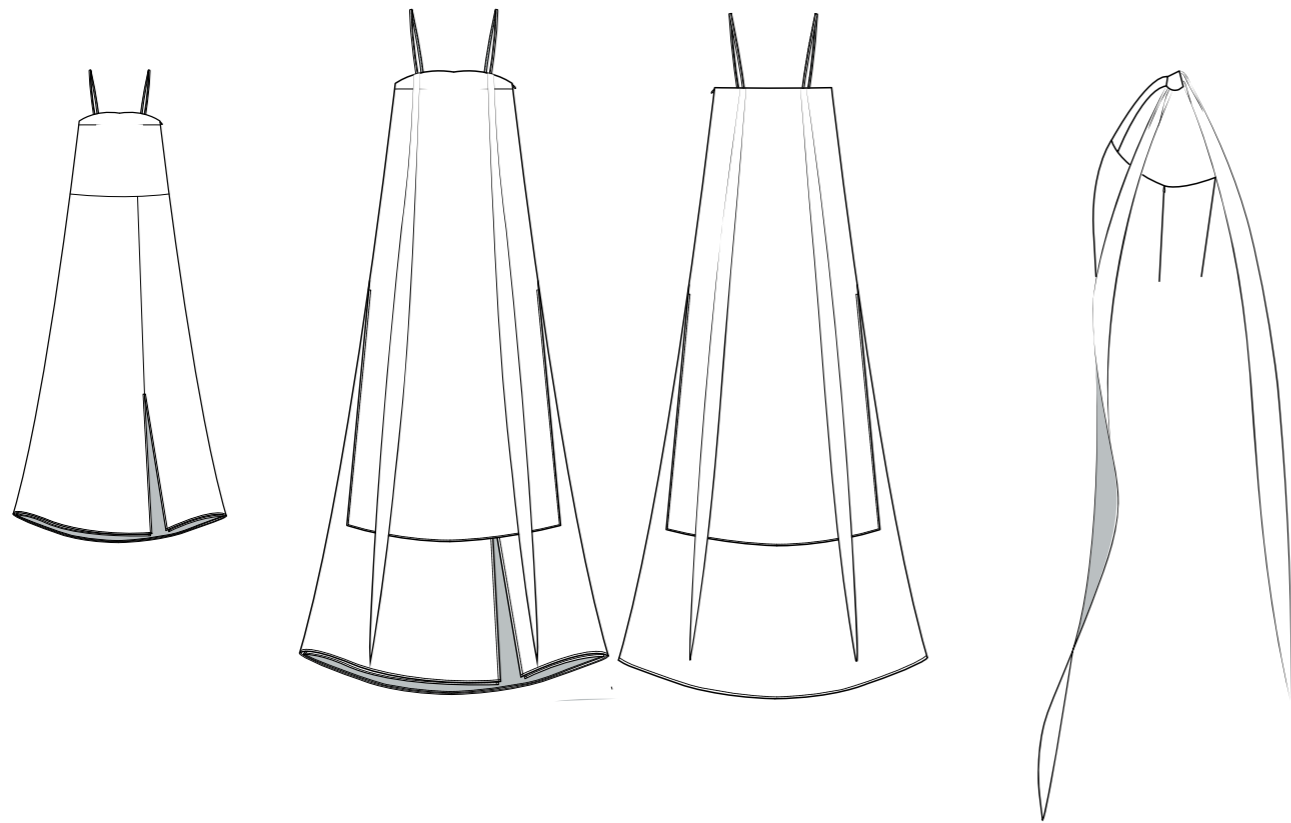
*E*

*M*

*M*

*E*

*I / F*



*E*

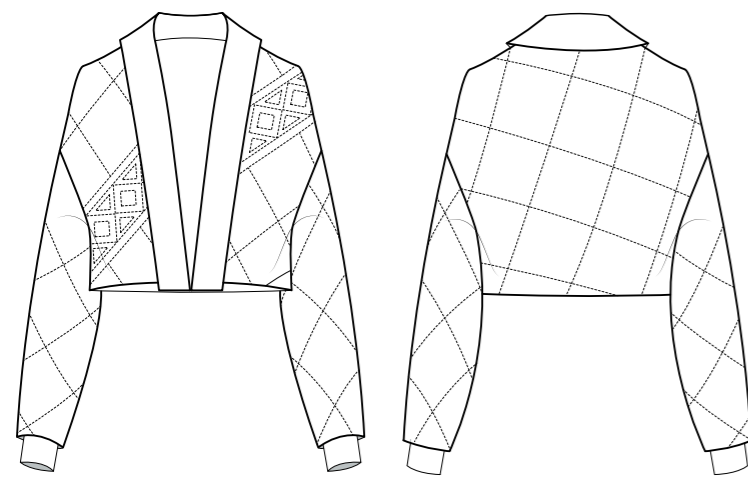
*Finishings - invisible zipper, invisible stitch*

*Fabric -*

*Finishings - invisible zipper, lining, organza for volume*

*Fabric -*

*M*



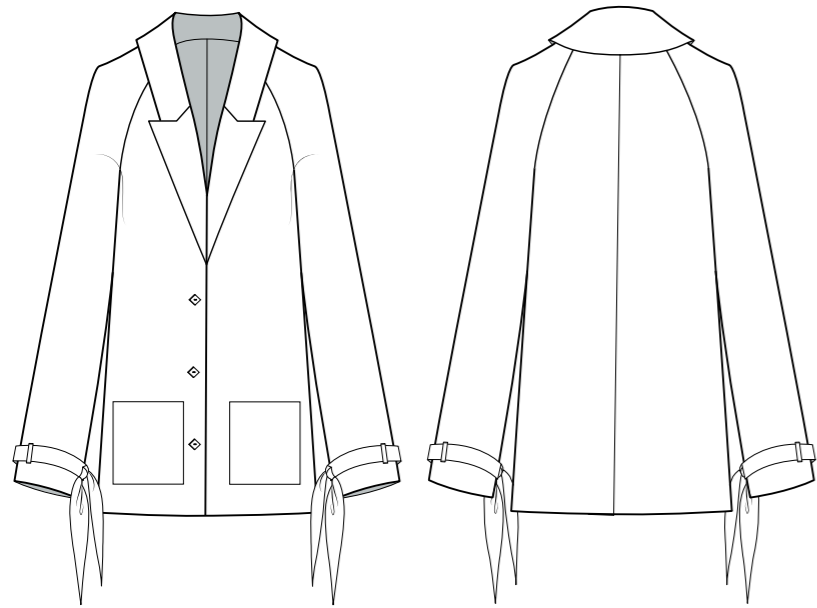
*Finishings - Raw silk hand stitch mix with machine stitch  
invisible stitch, lining*

*Fabric -*



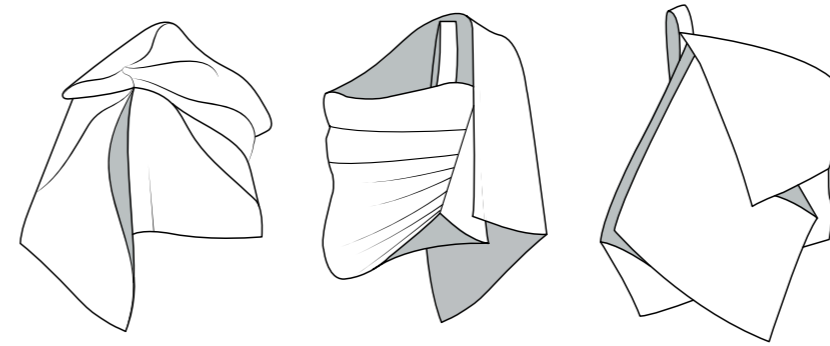
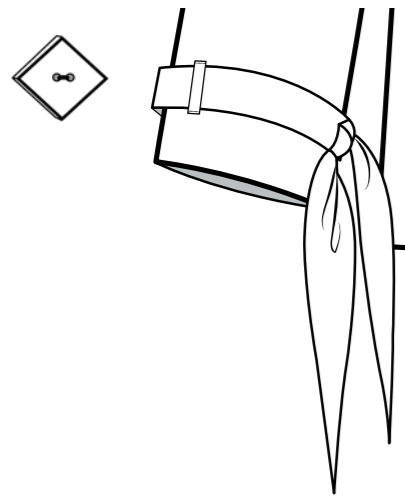
*M*

*E*



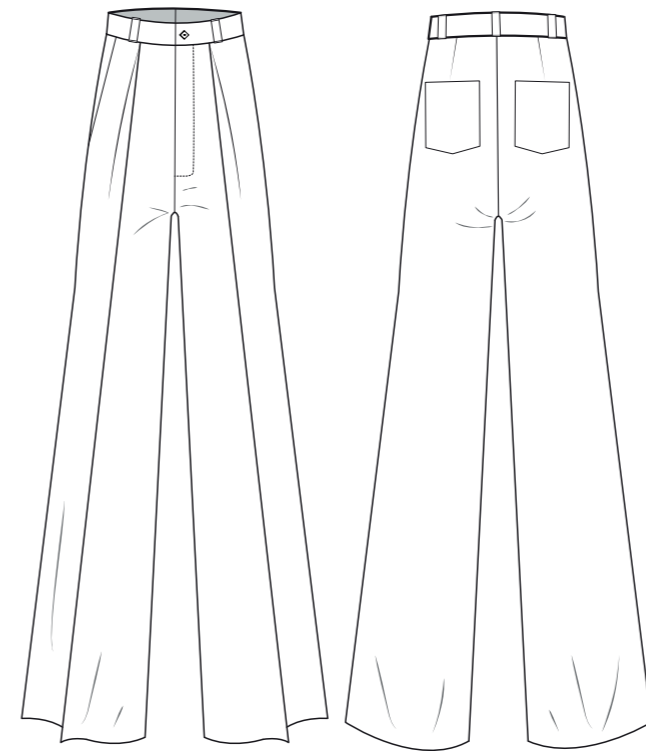
Finishings - Personalised buttons, lining, invisible hand stitch, hand-sewn pockets

Fabric -



Finishings - Snap Buttons, invisible stitch

Fabric -



Finishings - Zipper, personalised button, hand-sewn pockets

Fabric -

E

M

M

E



*I /  
F*

*E*

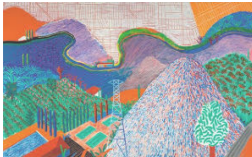
*M*

*M*

*E*



www.sun-wear.fr. (2017). *Expo : David Hockney fête ses 80 ans à la Tate Britain*. [online] Available at: [http://www.sun-wear.fr/article/expo-david-hockney-fete-ses-80-ans-a-la-tate-britain\\_a7791/1](http://www.sun-wear.fr/article/expo-david-hockney-fete-ses-80-ans-a-la-tate-britain_a7791/1) [Accessed 3 Jan. 2022].



collections.lacma.org. (n.d.). *David Hockney Mulholland Drive: The Road to the Studio* | LACMA Collections. [online] Available at: <https://collections.lacma.org/node/247320>.



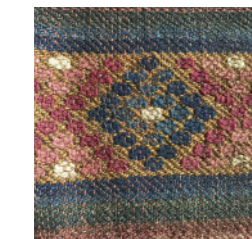
Bhutan Tours. (2019). *Bhutan Textile Tour – 15 Days* | Go Bhutan Tours. [online] Available at: <https://www.gobhutantours.com/bhutan-textile-tour-15-days/>.



lush, E. (n.d.). *Kira, Tingma and Aikapur Weaving, Bhutan*. [online] The Textile Atlas. Available at: <https://www.thetextileatlas.com/craft-stories/kira-tingma-and-aikapur-weaving-bhutan> [Accessed 3 Jan. 2022].



Twitter. (n.d.). <https://twitter.com/zeninsidezen/status/1039387110749466624/photo/1>. [online] Available at: <https://t.co/QGyykUROXS> [Accessed 3 Jan. 2022].



WOVENSOULS (n.d.). *1302 MASTERPIECE Antique Bhutan Charkab Rain Cloak*. [online] WOVENSOULS. Available at: [https://wovensouls.com/products/1302-antique-bhutan-charkhap-rain-cloak?utm\\_campaign=outfy\\_sm\\_1546940793\\_222&utm\\_medium=socialmedia\\_post&utm\\_source=pinterest](https://wovensouls.com/products/1302-antique-bhutan-charkhap-rain-cloak?utm_campaign=outfy_sm_1546940793_222&utm_medium=socialmedia_post&utm_source=pinterest) [Accessed 3 Jan. 2022].



Wellesley-Smith, C. (2015). *Slow stitch : mindful and contemplative textile art*. London: Batsford, An Imprint Of Pavilion Books Company.

*Perhaps the journey to building the collection is also finding one of the natures of women, reminding society the importance of this existence. Even though we came from different cultural background, we still share this nature of being a women. And being a women is so much more.*

*Yeshey Choden MFDW  
Istituto Marangoni 2021*

A photograph of a folded, light-colored fabric, possibly a piece of clothing or a textile sample, laid out on a dark surface. The fabric features a prominent geometric pattern of red and black lines, forming various shapes like triangles and squares. The word "WOMEN" is overlaid in the center in a white, serif font. The lighting is soft, highlighting the texture and folds of the fabric.

*WOMEN*